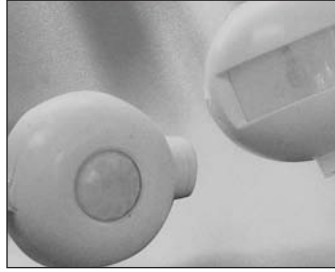


Stem and Canopy Sets. Fixed and Swivel (45°) Canopy Stems 6" to 60" - 3/8" Trade Size (5/8" OD) Consult factory for longer lengths.



Aircraft Cable Options

- 5" Round Canopy
- Adjustable Cable power feed and hang only.

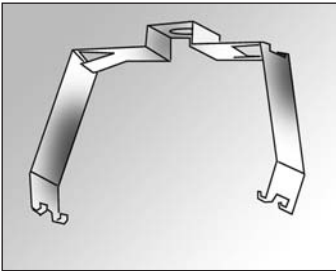


Occupancy Sensors

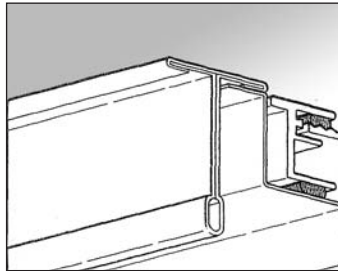
- Fixture Mount Sensors - Passive infrared or ultrasonic
- High Bay Sensors



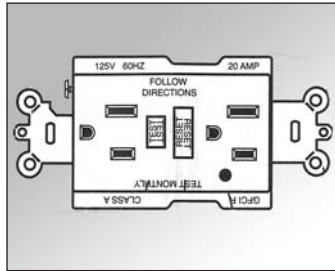
Emergency Ballast Options
 Emergency Lighting for for 1 or 2 lamps in all lamp sizes and weather conditions.



Surface Mounting Bracket
 Vapor Tight fixtures (VT) and Citadel Series.



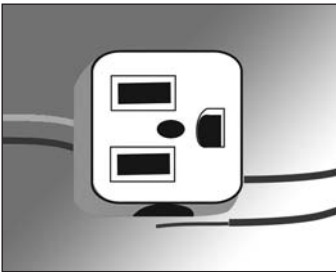
Gasketing
 Single, Double or Triple Gasketing. Factory installed to meet your specifications.



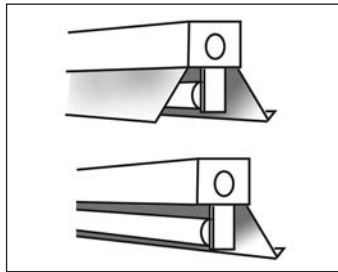
Ground Fault Circuit Interrupter
 Helps prevent electrical shocks due to ground faults.



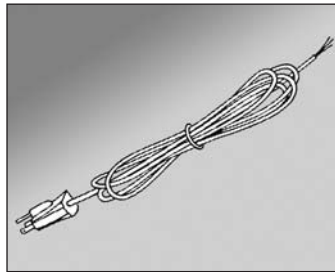
Dimming Ballasts
 Factory installation of specified ballast manufacturer in 2 wire, and low voltage applications.



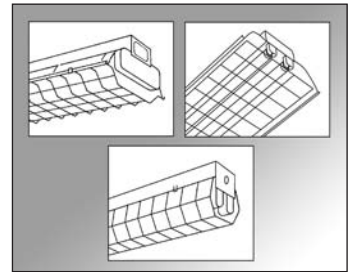
Grounded Convenience Outlet
 CO=Ordering Code - 120v only.



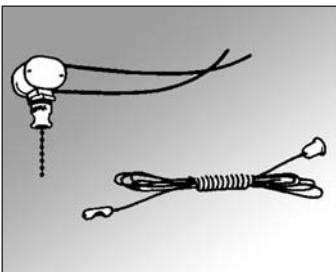
Symmetric, Asymmetric and Directional Reflectors
 Available for 1 & 2 lamp strip fixtures, staggered strips & side mounts



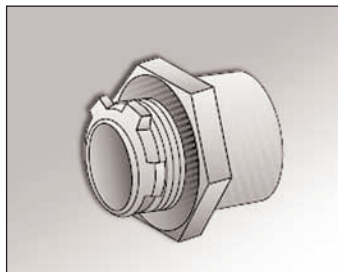
Cord and Plug Sets
 3-wire, 6' black cord and plug set. Other options consult factory. Various nema configuration cord.



Wire Guards
 4' wireguards for 1 or 2 light strip and industrial fixtures. Available for High Bay fixtures.



Pull, Turn & Rocker Switches
 Switches in 120v for Undercounter, selected Strip and Industrial Fixtures. Consult factory for application.



Wet Location Hubs
 Available for Vapor Tight (VT) and Citadel Series.

New England Lighting has a full inventory of parts and accessories to complete your installation. In addition we can customize any order to fit your specifications. Please contact our sales representative now for any information or questions you might have or visit our website at:

www.newenglandlighting.com

NEW ENGLAND
LIGHTING
 INCORPORATED

201 Crescent Avenue Chelsea MA 02150
 (617) 887-1515, (800) 247-3230 Fax (617) 889-6529