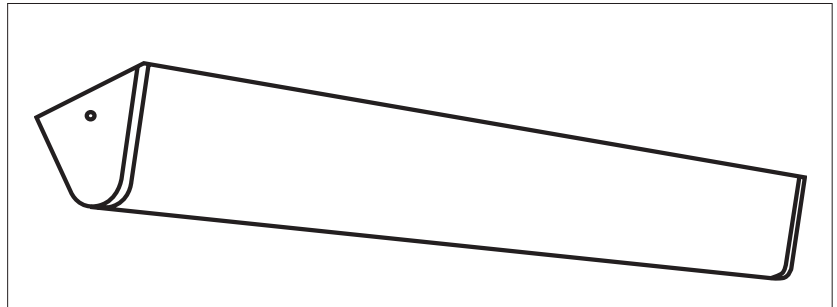
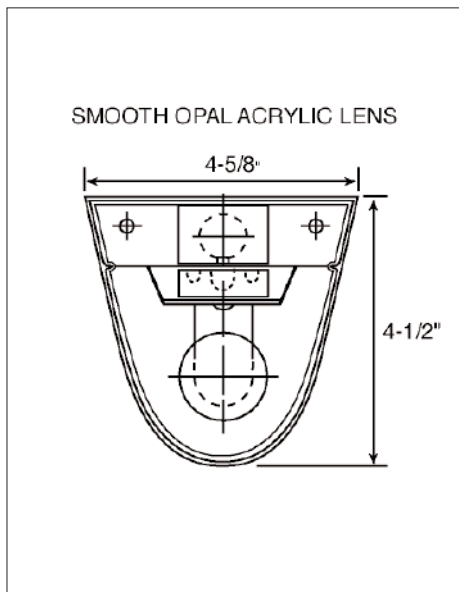


# COR SERIES

Crisp, clean contemporary design provides soft even illumination. Smooth opal, acrylic lens hides lamp image and cuts glare. Ideal unit for corridor lighting



## Dimensional Data



## Specifications

**Mounting:** Units can be either wall or ceiling mounted individually or in continuous rows. For continuous row mounting end caps are removed and fixtures joined together for continuous wireway.

**Construction:** Fixture housing are die-formed of heavy guage steel to insure uniformity and dimensional stabilty.

**Shielding:** Smooth opal extruded acrylic for maximum glare free light distribution. Eight foot fixtures provided with 2 four foot diffusers.

**Finish:** All metal parts are thoroughly cleaned and treated to prevent rust and deterioration with phospate coating in a five stage process. Surfaces are then electrostatically sprayed with high quality white enamel to provide a minimum reflectance of 87%.

**Wiring:** Standard ballast 120 volt.

**Approval:**All units are Underwriter's Laboratories (UL) approved and bear their label.

## Ordering Information

Catalog #	Lamp	Length	Catalog #	Lamp	Length
ELECTRONIC T12			ELECTRIC OCTRON T8		
COR115	1-F15T12	18"	COR120EBO	1-F17T8	24"
COR120	1-F20T12	24"	COR130EBO	1-F25T8	36"
COR130EB	1-F30T12	36"	COR140EBO	1-F32T8	48"
COR140EB	1-F40T12	48"	COR140TEBO	2-F32T8	96"
COR140TEB	2-F40T12	96"	COR140T/140EBO	3-F32T8	144"
			COR140T/140TEBO	4-F32T8	192"

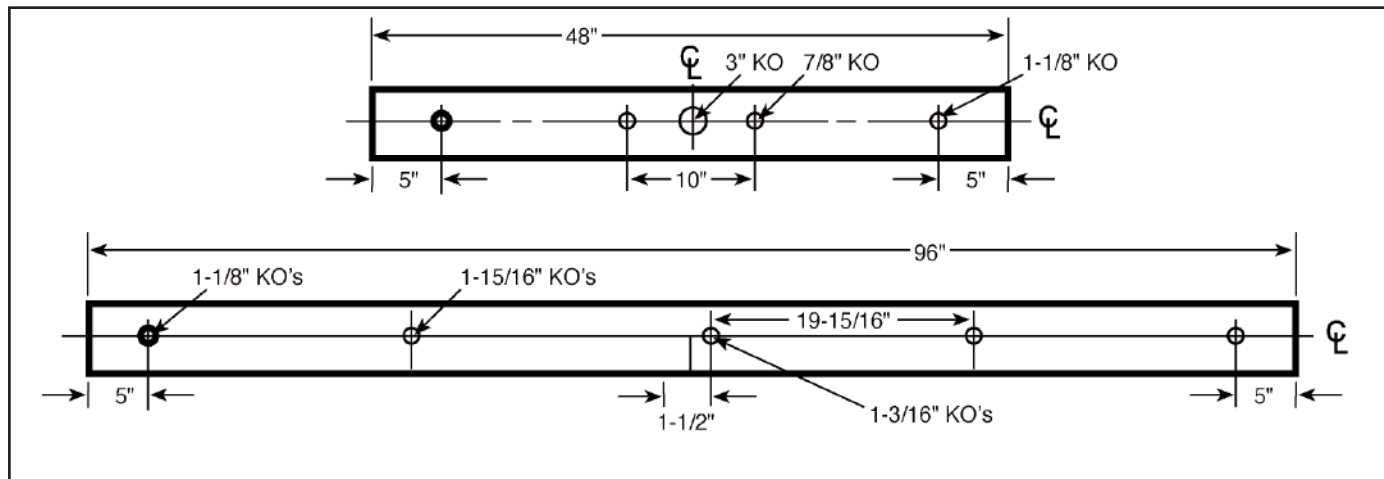
NEW ENGLAND  
  
 INCORPORATED

# COR SERIES

## Options and Accessories

<b>EB</b>	Electronic T12	<b>EM2</b>	Emergency Ballast (2 lamp)
<b>RFI</b>	Radio Interference Filter	<b>EM</b>	Emergency Ballast (1 lamp)
<b>DIM</b>	Dimming Ballast	<b>FS</b>	External Fuse and Holder

## Installation Data



Photometrics: Photometric information available upon request

