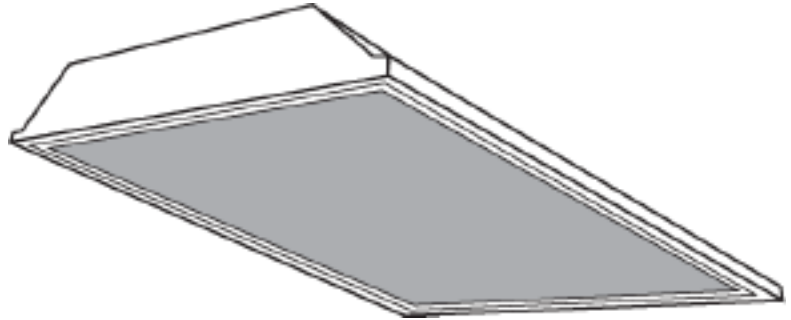
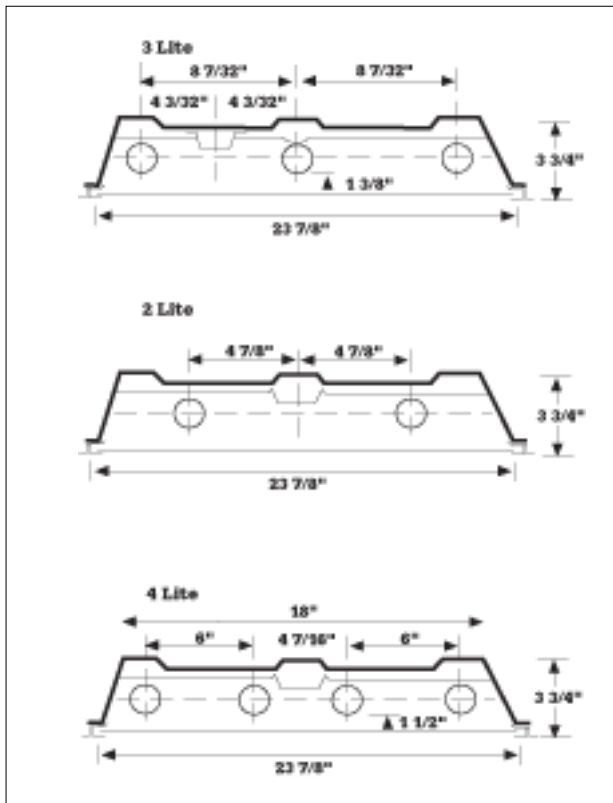


# RECESS TROFFER GRID 2X4

A time proven design allows the fixture to dominate in the area of quality lighting. Multiple lamp quantities along with a variety of diffusing media to meet and compliment most lighting specifications.



## Dimensional Data



## Specifications

**Mounting:** Units are designed to be installed into recessed inverted T-Bar ceilings. Ends contain built-in earthquake clips for added support. All units have wire hanger tabs for independent wire suspension.

**Construction:** Fixture housing is die formed of heavy gauge steel in conjunction with die embossments to insure maximum rigidity and dimensional stability. Edges are rounded for optimum safety.

**Shielding:** 100% virgin acrylic is standard. All shielding options are completely enclosed in a heavy gauge steel frame which is invisibly hinged. (See reverse for optional frames and shielding.)

**Finish:** All metal parts are thoroughly cleaned and treated with a phosphate coating to prevent rust. Surfaces are electrostatically sprayed with high quality white enamel for maximum reflectance.

**Wiring:** Access plate provides easy access through top of fixture to ballast leads. Standard voltage is 120v.

**Approval:** All units are (UL) listed.

## Ordering Information

Catalog #	Lamp	Size	Catalog #	Lamp	Size
ELECTRONIC T12			ELECTRONIC OCTRON T8		
<b>RWG240AEB</b>	<b>2-F40T12</b>	<b>2x4</b>	<b>RWG240AEBO</b>	<b>2-F32T8</b>	<b>2x4</b>
<b>RWG340AEB</b>	<b>3-F40T12</b>	<b>2x4</b>	* <b>RWG340AEBO</b>	<b>3-F32T8</b>	<b>2x4</b>
<b>RWG440AEB</b>	<b>4-F40T12</b>	<b>2x4</b>	* <b>RWG440AEBO</b>	<b>4-F32T8</b>	<b>2x4</b>

\*Standard Unit - single ballast-for dual switching add suffix "/2".  
Example: **RWG340AEBO/2**.

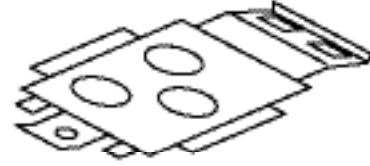


# RECESS TROFFER GRID 2X4

Shielding Options for shield options change "A" to:

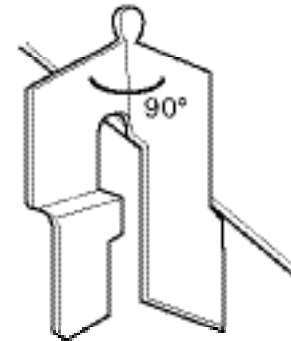
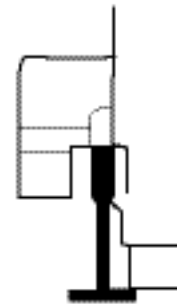
<b>A125</b>	.125 Prismatic Acrylic.
<b>A156</b>	.156 Prismatic Acrylic.
<b>DR</b>	High Impact Prismatic Acrylic.
<b>FOA</b>	Flat Opal Acrylic.
<b>DPA</b>	Drop Opal Acrylic Dish.
<b>PL</b>	1/2 x 1/2 x 1/2 White Cube Louver.
* <b>PAS</b>	9/16 x 9/16 x 1/2 Specular Silver Parabolic Louver.
* <b>PAS34</b>	3/4 x 3/4 x 1/2 Specular Silver Parabolic Louver.
* <b>PVS</b>	1 1/2 x 1 1/2 x 1 Specular Silver Parabolic Louver.
<b>PVW</b>	1 1/2 x 1 1/2 x 1 White Parabolic Louver.
* Prismatic Acrylic/Parabolic Louver Combination Example: <b>PASAL</b> .	

Installation Data



Access Plate

Integral Earthquake Clips for Support



Accessories Add Suffix

<b>REF</b>	Internal Polished Aluminum Reflector.
<b>REFS</b>	Internal Specular Silver Reflector.
<b>NY</b>	New York City Approved - 20GA.
<b>EM</b>	Emergency Ballast-Standard Light 1Lamp. (For 2 Lamp Ballast - <b>EM/2</b> ).
<b>DIM</b>	Dimming Ballast.
<b>RFI</b>	Radio Interference Filter.
<b>FS</b>	External Fuse and Holder.
<b>WP63</b>	6' 3 Wire Whip.
<b>MS</b>	Master/Slave (6' Interconnect Standard).
<b>PP</b>	Shrink Wrap Pallet Less Cartons. Corrugated End Caps for Protection.

Photometrics

Photometric Information available upon request.

Frame Options

<b>RG</b>	White Regress Frame.	<b>GASK</b>	Gasketed
<b>RGB</b>	Black Regress Frame.	<b>GASK2</b>	Double Gasketed
<b>TP</b>	Tamper Proof Latches.	<b>GASK3</b>	Triple Gasketed
Example: <b>RWG240RGAEB</b>			

