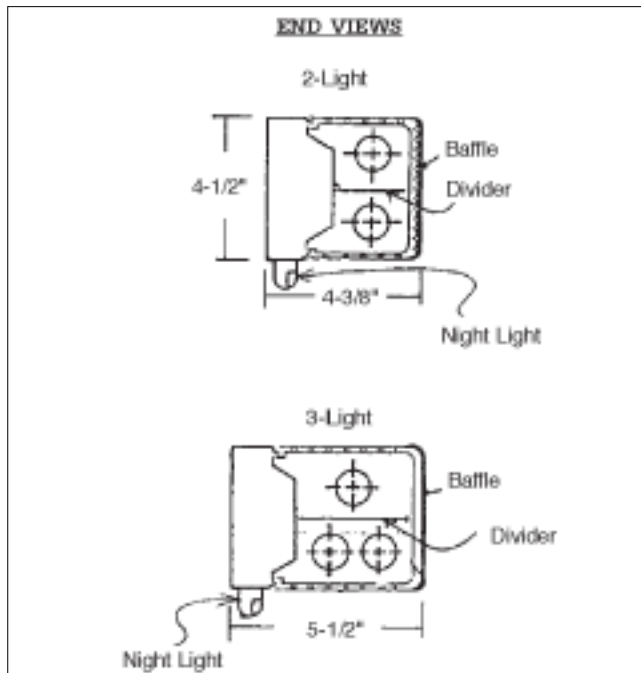


HOS SERIES

HOS Series is both attractive and functional, providing excellent indirect and direct lighting for patient care and inspection. Typical applications are hospitals, nursing homes, convalescent homes and health care centers.



Dimensional Data



Specifications

Mounting: Units should be wall mounted. Adequate knockouts are provided to assure mounting ease.

Construction: Fixture housing is die formed of heavy gauge sheet metal to insure uniformity and dimensional stability. Front baffle and lamp divider standard. Units are completely factory assembled and ready for installation.

Finish: External housing front and baffle white finished. Internal divider and ballast cover are baked white enamel with minimum reflectance factor of 87% - white exterior available upon request.

Diffuser: One piece striated lens diffuser for increased comfort level white maintaining full light output.

Wiring: Two separately switched ballasts and four (4) way (2) circuit pull switch standard.

Approval: All units are UL approved.

Ordering Information

Catalog #	Lamp	Length	Catalog #	Lamp	Length
ELECTRONIC T12			ELECTRONIC OCTRON T8		
HOS220WEB	2-F20T12	24"	HOS220WEBO	2-F17T8	24"
HOS230WEB	2-F30T12	36"	HOS230WEBO	2-F25T8	36"
HOS240WEB	2-F40T12	48"	HOS240WEBO	2-F32T8	48"
HOS320WEB	3-F20T12	24"	HOS320WEBO	3-F17T8	24"
HOS330WEB	3-F30T12	36"	HOS330WEBO	3-F25T8	36"
HOS340WEB	3-F40T12	48"	HOS340WEBO	3-F32T8	48"

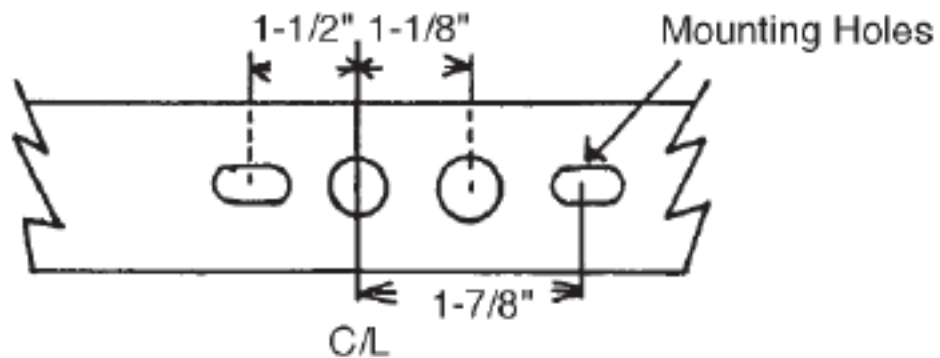


HOS SERIES

Options and Accessories *Add Suffix*

RFI	Radio Interference Filter	CO	Grounded Convenience Outlet
NL	Separate Switched Night Light	FS	External Fuse Holder

Installation Data



15w	18-1/4"	Mounting hole standard for each size.
20w	24-1/4"	
30w	36-1/4"	
48w	48-1/4"	

Photometrics

Photometric Information available upon request.

