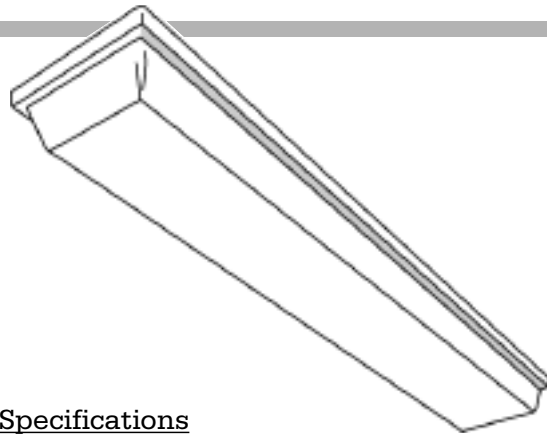
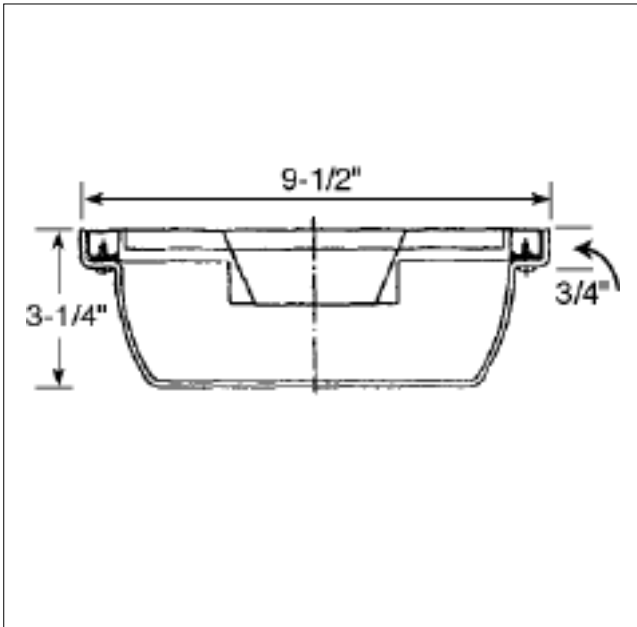


VP SERIES

This fixture was designed with a heavy polycarbonate lens and a tamper proof mounting system to deter vandalism in the highest risk areas.



Dimensional Data



Specifications

Mounting: Units must be surface mounted. Adequate KOs provided to insure base of installation.

Construction: One piece housing of heavy gauge steel. Tamper proof screws standard.

Finish: All internal metal parts are cleaned and treated with phosphate coating applied automatically in a five stage process to prevent rust. Surfaces are then sprayed with high quality baked enamel to provide maximum light output.

Diffuser: Manufactured from .187" thick clear polycarbonate with pyramidal prism design on the bottom and vertical perimeter rib for maximum light control and efficiency.

Wiring: Standard ballast are 120 volt.

Approval: All units are UL listed.

Ordering Information

<i>Catalog #</i>	<i>Lamp</i>	<i>Length</i>	<i>Depth</i>	<i>Width</i>	<i>Catalog #</i>	<i>Lamp</i>	<i>Length</i>	<i>Depth</i>	<i>Width</i>
ELECTRONIC T12					ELECTRONIC OCTRON T8				
VP140EB	1-F40T12	51"	4-3/4"	4-7/8"	VP140EBO	1-F32T8	51"	4-3/4"	4-7/8"
VP220EB	2-F20T12	27"	3-1/4"	9-1/2"	VP220EBO	2-F17T8	27"	3-1/4"	9-1/2"
VP240EB	2-F40T12	51"	3-1/4"	9-1/2"	VP240EBO	2-F32T8	51"	3-1/4"	9-1/2"



VP SERIES

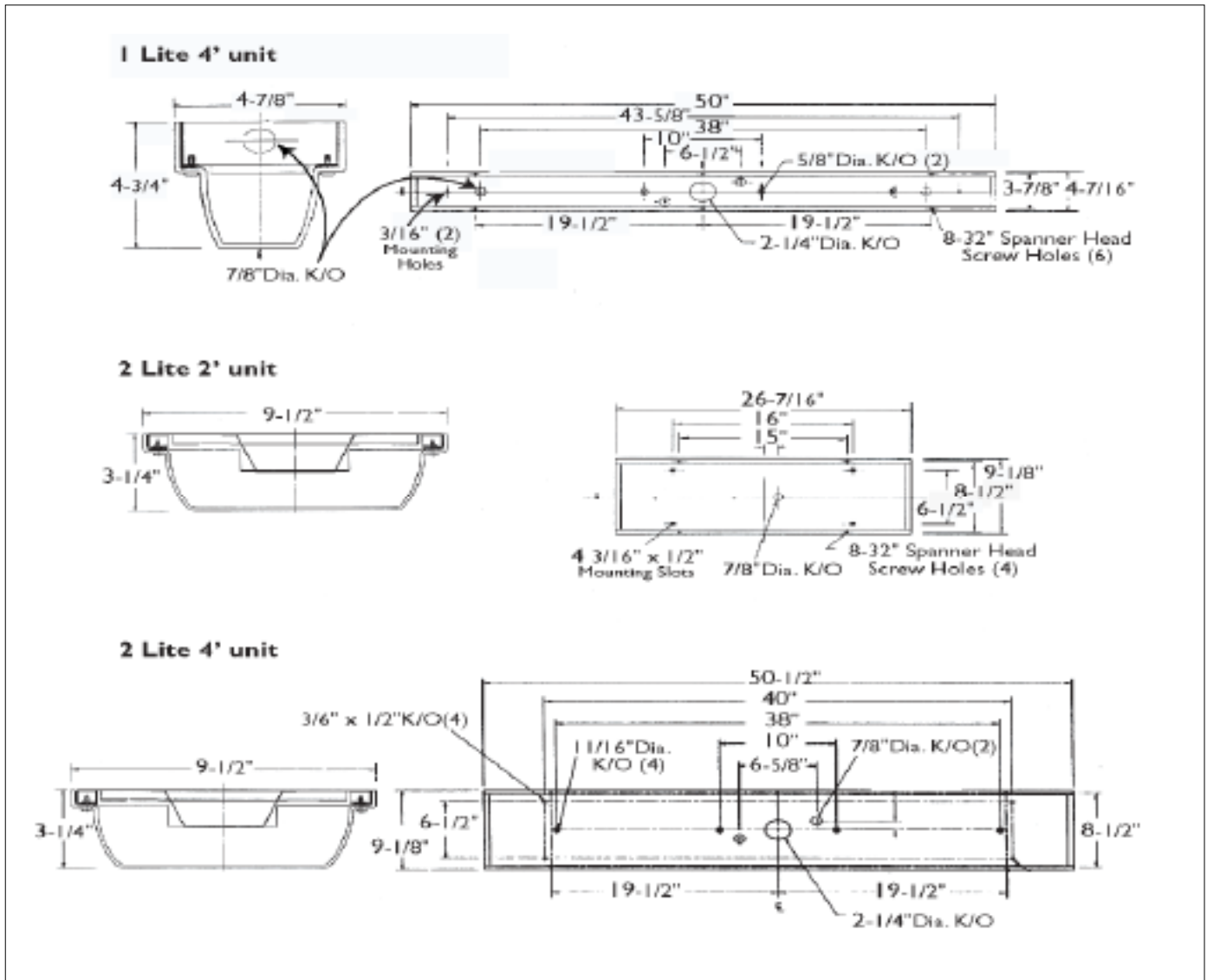
Options and Accessories Add Suffix

RFI	Radio Interference Filter	FS	External Fuse Holder
DIM	Dimming Ballast	*EM/2	Emergency Ballast (2 lamp)
EM	Emergency Ballast (1 lamp)		

Conduit Adapter 2L available

* Note: Consult Factory on Compatibility EM/2 Option.

Installation Data



Photometrics

Photometric Information available upon request.

