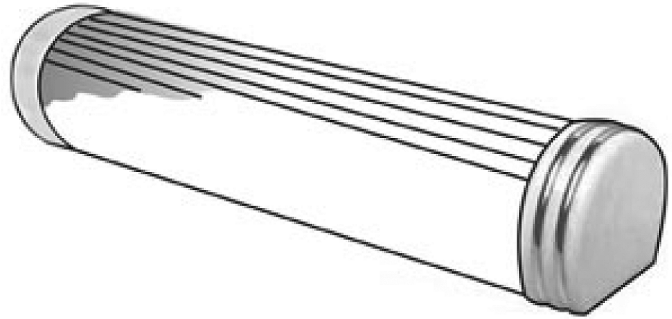
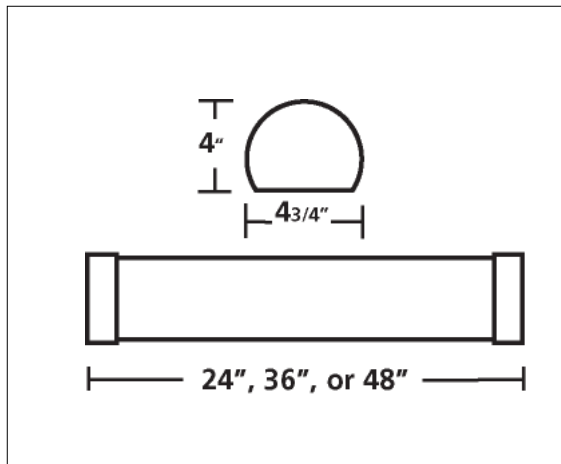


DECORATIVE ENDCAP BATH BARS

Decorative Endcap Bath Bar Series of diffuser assemblies, allows to produce a cost effective, yet elegant styled luminaire. The diffuser assembly consists of a solid white (standard), clear ribbed or white ribbed profile material to a choice of end cap colors.



Dimensional Data



Specifications

Construction: All metal parts die formed from heavy gauge cold rolled steel housing with ample knockouts for mounting and electrical feeds.

Finish: All steel parts are finished in baked white enamel.

Diffuser: The one-piece diffuser is formed from .125" thick smooth white acrylic. Each designer end cap is sonically welded onto the diffuser for a permanent fit. The entire assembly mounts onto the housing with spring clips

Wiring: All ballasts are electronic for linear T8 or T12. Standard ballast 120 volt.

Approval: All units are Underwriter's Laboratories (UL) approved.

Ordering Information

White	Lamps	Length
ELECTRONIC T12		
ECB220WEB	2-F20T12	2'
ECB230WEB	2-F30T12	3'
ECB240WEB	2-F40T12	4'
ELECTRONIC OCTRON T8		
ECB220WEBO	2-F17T8	2'
ECB230WEBO	2-F25T8	3'
ECB240WEBO	2-F32T8	4'

For Ivory Marble Ends add IV to catalog number. Example: **ECB240WEBO/IV**

Optional Ends

	IV-Ivory Marble		VG-Verde Green
	PM-Peach Marble		BM-Black Marble
	SW-Solid White		AL-Alabaster
	TO-Tortoise		WM-White Marble
			BG-Black Gravel

Diffusers

W White Smooth
WR White Ribbed
CR Clear Ribbed

Photometrics:

Photometric Information available upon request.

NEW ENGLAND

 I N C O R P O R A T E D